

METAL TUBE FLOW METER BF300



PATENT NO.

Taiwan: M332836
China: 1187801



Ex d IIB + H₂ T₆
工電(2015)第00151號

Technical Data

BF300 for high flows of gas, liquid, steam

Material: Aluminum alloy case with paint; SS316 available

Body Wetted Parts: SS316; SS316+PTFE lining (PVDF float); others on request; indication via magnetic coupling (no sealed)

Scales Calibrated: in l/h, m³/h, kg/h, %, etc.

Flow Rates For:

SS316 Float:

- Water: 1 l/h up to 100,000 l/h (special ranges on request)
- Air: 0.03 Nm³/h up to 1,200 Nm³/h (special ranges on request)

PVDF Float:

- Water: 4 l/h up to 10,000 l/h (special ranges on request)
- Air: 0.1 Nm³/h up to 450 Nm³/h (special ranges on request)

Connection Types: Thread Type, Flange type, Trip Clamp & Sanitary (other on request)

Connection Size: ½"~5"

Mounting Length: 250mm standard; Connection size bigger than 3": mounting length is 300mm; 300mm for explosion proof.

Temperature: -50°C to +200°C (standard); up to 400°C on request.

Protection Class: IP66 or Explosion proof, Class I, Groups B, C & D; Class II, Groups E, F & G; NEMA 4, 7, 9

Accuracy: ±2% F.S (±1.6% F.S option)

Max. Pressure: 40 kg/cm² (standard); Option: up to 100 kg/cm²

Option: Switch available (Micro switch 5A/125VAC, 5A/250VAC, 2A/30VDC); Adjustable reed alarm switch available (form A bistable type, N.O. type); Adjustable inductive alarm switch available; 4~20mA 2-wires analog output available

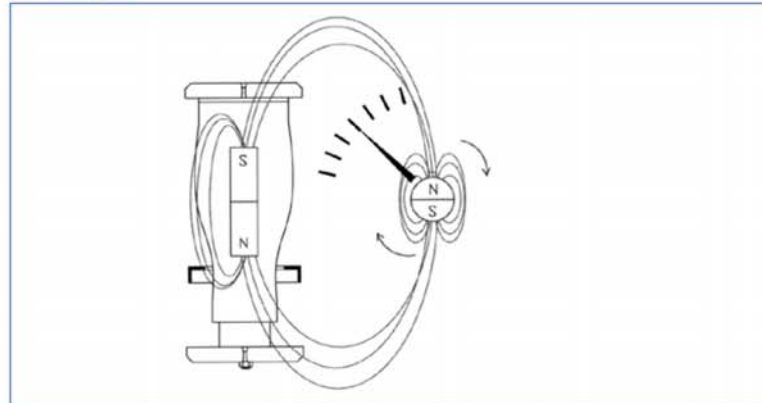
LCD Display: available

***HART® Communication:** available

Two Wire Transmitter with HART® Protocol:

- Galvanic Isolation
- Suitable for application in SIL 2 installations

Principle

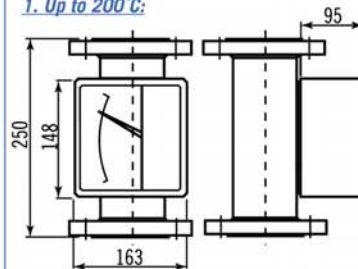


Dimensions-mm

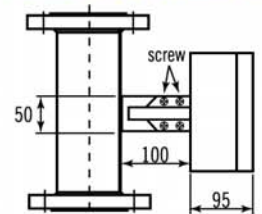
IP66

Case Type: (A-1) Rectangle Bolt Tight Type
Housing Material: Aluminum alloy case with paint

1. Up to 200°C:



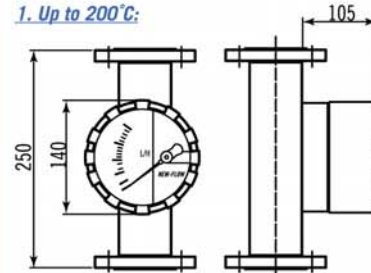
2. Up to 400°C c/w cooling element:



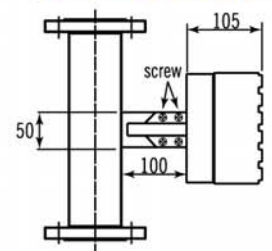
IP66

Case Type: (A-2) Round Screw Tight Type
Housing Material: Aluminum alloy
Case Type: (B) Round Screw Tight Type
Housing Material: SS316

1. Up to 200°C:

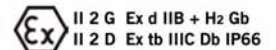


2. Up to 400°C c/w cooling element:

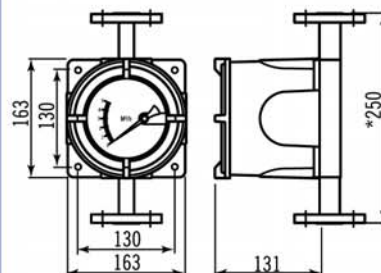


Explosion Proof

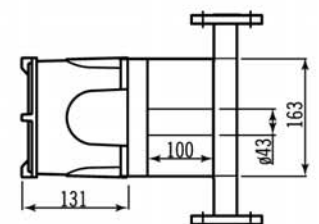
Class I, Groups B, C & D; Class II, Groups E, F & G; NEMA 4, 7, 9



1. Up to 200°C:



2. Up to 400°C c/w cooling element:



*Mounting length: 250mm standard
Connection size bigger than 3", mounting length is 300mm.

Standard Scales

A. Float Material: SS316, SS316L available

Tube	L/H 20°C Water	NM ³ /H Air 0°C 1.013bar	PmmWater	Connection	Accuracy (NOTE 1.)
BF300a	1 ~ 10	0.03 ~ 0.3	≤750	½"	±5% F.S
BF300b	1.8 ~ 18	0.06 ~ 0.6	≤750	½"	±5% F.S
BF3001	2.5 ~ 25	0.075 ~ 0.75	≤750	½"	±5% F.S
BF3002	4 ~ 40	0.13 ~ 1.3	≤750	½"	±5% F.S
BF3003	5.5 ~ 55	0.17 ~ 1.7	≤750	½"	±5% F.S
BF3004	8 ~ 80	0.2 ~ 2	≤750	½"	±2% F.S
BF3005	16 ~ 160	0.5 ~ 5	≤750	½"	±2% F.S
BF3006	18 ~ 180	0.6 ~ 6	≤750	½"	±2% F.S
BF3007	30 ~ 300	1 ~ 10	≤750	½"	±2% F.S
BF3008	50 ~ 500	1.5 ~ 15	≤750	½"	±2% F.S
BF3009	60 ~ 600	1.8 ~ 18	≤750	½"	±2% F.S
BF3010	70 ~ 700	2 ~ 20	≤750	½"	±2% F.S
BF3011	100 ~ 1000	3 ~ 30	≤750	¾"	±2% F.S
BF3012	120 ~ 1200	4 ~ 40	≤750	1"	±2% F.S
BF3013	160 ~ 1600	5 ~ 50	≤700	1"	±2% F.S
BF3014	200 ~ 2000	6 ~ 60	≤700	1"	±2% F.S
BF3015	240 ~ 2400	7 ~ 70	≤700	1"	±2% F.S
BF3016	280 ~ 2800	8.5 ~ 85	≤700	1"	±2% F.S
BF3017	320 ~ 3200	9 ~ 90	≤700	1"	±2% F.S
BF3018	350 ~ 3500	10 ~ 100	≤700	1"	±2% F.S
BF3019	500 ~ 5000	14 ~ 140	≤650	1½"	±2% F.S
BF3020	600 ~ 6000	15 ~ 150	≤650	1½"	±2% F.S
BF3021	700 ~ 7000	20 ~ 200	≤650	1½"	±2% F.S
BF3022	800 ~ 8000	24 ~ 240	≤650	1½"	±2% F.S
BF3023	1000 ~ 10000	30 ~ 300	≤650	2"	±2% F.S
BF3024	1200 ~ 12000	35 ~ 350	≤650	2"	±2% F.S
BF3025	1400 ~ 14000	40 ~ 400	≤650	2"	±2% F.S
BF3026	1500 ~ 15000	45 ~ 450	≤1000	2"	±2% F.S
BF3027	1800 ~ 18000	60 ~ 600	≤800	2½"	±2% F.S
BF3028	2000 ~ 20000	75 ~ 750	≤800	2½"	±2% F.S
BF3029	2300 ~ 23000	90 ~ 900	≤850	3"	±2% F.S
BF3030	2500 ~ 25000	120 ~ 1200	≤1000	3"	±2% F.S
BF3031	2800 ~ 28000	-----	≤1100	3"	±2% F.S
BF3032	3000 ~ 30000	-----	≤1200	3"	±2% F.S
BF3033	3500 ~ 35000	-----	≤1000	4"	±2% F.S
BF3034	4000 ~ 40000	-----	≤1000	4"	±2% F.S
BF3035	5000 ~ 50000	-----	≤1200	4"	±2% F.S
BF3036	6000 ~ 60000	-----	≤1500	4"	±2% F.S
BF3037	10000 ~ 100000	-----	≤2500	5"	±2% F.S

B. Float Material: PVDF (only SS316+PTFE lining wetted parts available)

Tube	L/H 20°C Water	NM ³ /H Air 0°C 1.013bar	PmmWater	Connection	Accuracy (NOTE 1.)
BF3001P	4 ~ 40	0.13 ~ 1.3	≤750	½"	±5% F.S
BF3002P	5.5 ~ 55	0.17 ~ 1.7	≤750	½"	±5% F.S
BF3003P	8 ~ 80	0.2 ~ 2	≤750	½"	±2% F.S
BF3004P	16 ~ 160	0.5 ~ 5	≤750	½"	±2% F.S
BF3005P	28 ~ 280	0.9 ~ 9	≤750	¾"	±2% F.S
BF3006P	35 ~ 350	1.1 ~ 11	≤750	¾"	±2% F.S
BF3007P	40 ~ 400	1.3 ~ 13	≤750	¾"	±2% F.S
BF3008P	50 ~ 500	1.5 ~ 15	≤750	1"	±2% F.S
BF3009P	70 ~ 700	2 ~ 20	≤700	1"	±2% F.S
BF3010P	90 ~ 900	2.5 ~ 25	≤700	1"	±2% F.S
BF3011P	100 ~ 1000	3 ~ 30	≤700	1"	±2% F.S
BF3012P	120 ~ 1200	4 ~ 40	≤700	1"	±2% F.S
BF3013P	160 ~ 1600	5 ~ 50	≤700	1"	±2% F.S
BF3014P	200 ~ 2000	6 ~ 60	≤700	1"	±2% F.S
BF3015P	250 ~ 2500	7 ~ 70	≤650	1"	±2% F.S
BF3016P	300 ~ 3000	9 ~ 90	≤650	1½"	±2% F.S
BF3017P	350 ~ 3500	10 ~ 100	≤650	1½"	±2% F.S
BF3018P	450 ~ 4500	12 ~ 120	≤650	1½"	±2% F.S
BF3019P	450 ~ 4500	13 ~ 130	≤650	1½"	±2% F.S
BF3020P	500 ~ 5000	14 ~ 140	≤650	1½"	±2% F.S
BF3021P	650 ~ 6500	18 ~ 180	≤650	2"	±2% F.S
BF3022P	700 ~ 7000	-----	≤650	2"	±2% F.S
BF3023P	800 ~ 8000	-----	≤650	2"	±2% F.S
BF3024P	900 ~ 9000	-----	≤650	2½"	±2% F.S
BF3025P	1000 ~ 10000	-----	≤650	2½"	±2% F.S

NOTE.

- The accuracy ±5% F.S for tube BF300a/b and BF3001(P)~BF3003(P).
The accuracy ±2% F.S for tube BF3004~BF3037 and BF3004P~BF3025P;
option ±1.6% F.S on request.
- Performance Technical Data are effective with date of issue and are subject to change without prior notice.

Damping Mechanical (Option Function)

